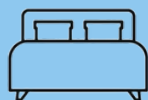


North Ipswich

High Physical Support Home



2



Bedroom

1



OOA

3



Bathroom



This high-quality shared living space in North Ipswich is designed to meet the 2021 NDIS SDA Design Standard for High Physical Support, providing a blend of independence and exceptional support. Just 3 minutes from Ipswich CBD, the property offers prime access to essential services, including medical centres, schools, shopping areas, libraries, and beautiful parks, all within easy reach.

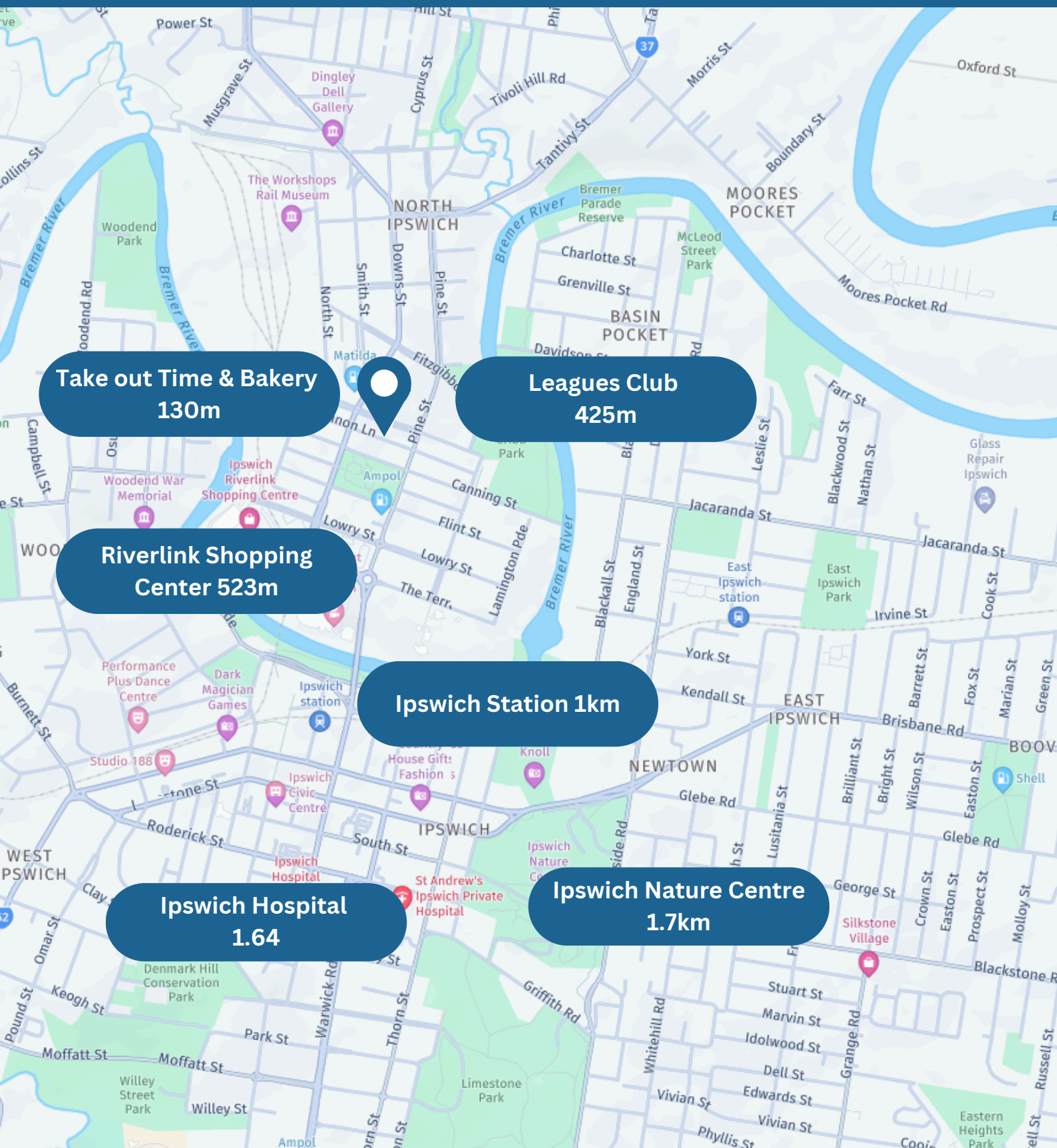
The property boasts a range of high physical support features, from spacious, adjustable kitchen benches and heating/cooling in each bedroom to ceiling hoist readiness and assistive technology compatibility. This eco-friendly, single-story home also includes solar panels, non-slip flooring, emergency power backup and wide pathways for ease of movement.

Living in Ipswich means enjoying Queensland's oldest provincial city, with its heritage-rich character, over 6,000 listed sites, and 550 parks. Riverlink Shopping Centre, Ipswich Hospital, and Browns Park are all close by, as are bus and train options for convenient travel. Plus, with a \$2,000 moving voucher from SDA Australia Group, your transition into this exceptional property is both smooth and affordable.

High Physical Support Inclusions

- Heating and cooling to each bedroom
- Emergency power back up system
- Custom kitchen cabinetry with knee toe clearances
- TV and data points to each bedroom
- Structural provisioning in bedrooms for ceiling hoists
- Wifi access points for increased coverage
- Heating and cooling to each bedroom
- Vandal proof door handles

Local Amenities



Take out Time & Bakery
130m

Leagues Club
425m

**Riverlink Shopping
Center 523m**

Ipswich Station 1km

Ipswich Hospital
1.64

Ipswich Nature Centre
1.7km

Ipswich

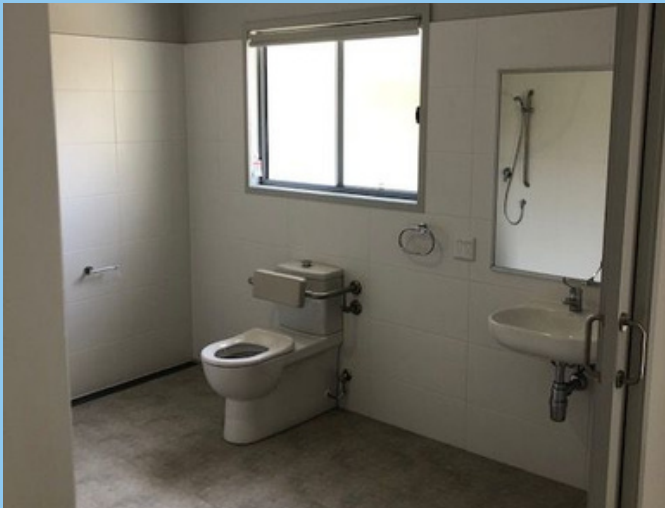
Ipswich, Queensland, is a charming city steeped in history, offering a blend of heritage charm, green spaces and vibrant community life. As one of Queensland's oldest cities, Ipswich is known for its well-preserved historic buildings and architecture, which take visitors on a journey through its rich past. The Ipswich Heritage Trail, guides people through iconic sites and buildings, making it a must-see for history buffs.

For those who love the outdoors, Ipswich has plenty of accessible recreational areas. The Ipswich Nature Centre in Queens Park is a family favourite, offering free entry to see native animals and gardens. There's also the stunning Nerima Gardens, a Japanese-inspired garden that's tranquil and accessible for all.

For adventure seekers, the Flinders-Goolman Conservation Estate provides trails suited to various skill levels, where visitors can enjoy hiking or even scenic picnics with breathtaking views. Riverlink Shopping Centre is popular for shopping, dining, and community events, while the Workshops Rail Museum celebrates Ipswich's industrial past and offers engaging activities for children and families.

Ipswich's community spirit shines through in its local markets, festivals and regular cultural events, like the Ipswich Festival, which brings locals together for live music, art displays and performances. The city also supports a growing arts scene with galleries and creative spaces, like the Ipswich Art Gallery, offering exhibitions that appeal to all ages.





Floor Plan



Submit your interest now

1300 869 203

peg@sdaaustraliagroup.com.au



SDA
AUSTRALIA GROUP
ALL HOMES – ALL WAYS