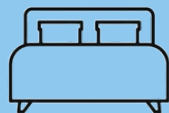


Murray Bridge

Robust Villa



1



Bedroom

1

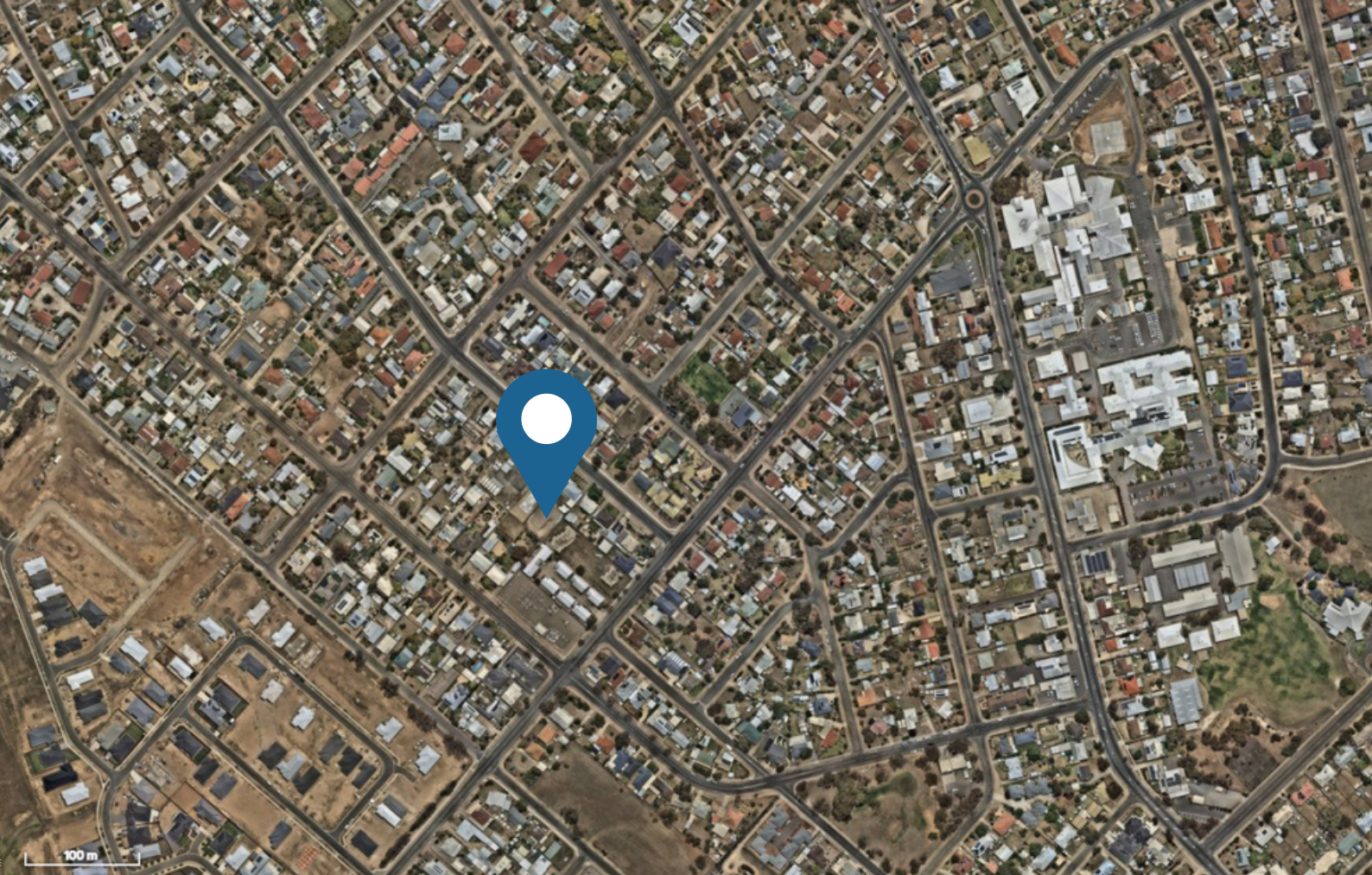


Bathroom

1



OOA



While Murray Bridge may seem laid-back, it has plenty to offer! Just over an hour from Adelaide, this riverside town is known for its strong sense of community, beautiful natural surroundings, and growing infrastructure.

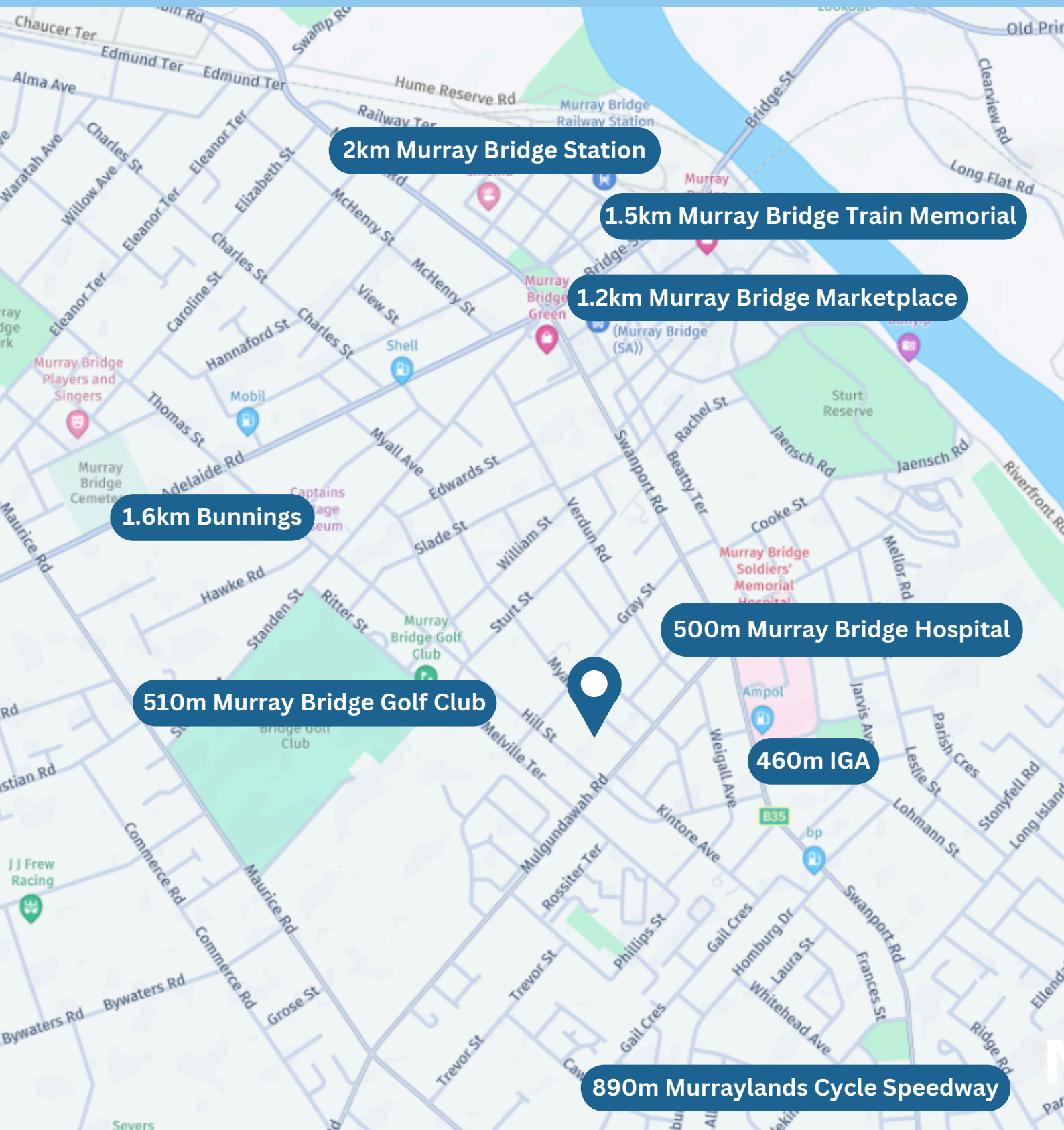
Nestled along the Murray River, it boasts scenic walking trails, a vibrant local market, modern shopping facilities, a hospital and transport connections direct to Adelaide. Inside your new home, you'll find strong walls, bullnosed corners, and durable finishes to keep everyone safe.

There's no need to share in our robust villa, with a spare room for your supports—not another participant.

Robust Inclusions

- Heating and cooling to each bedroom
- TV and data points to each bedroom
- Solid core doors, reinforced walls & sound proofing
- Private outdoor alfresco
- Turning points in all areas of the house
- Recessed lighting and tv wall niche
- Custom kitchen cabinetry with rounded edges
- Nonslip timber look vinyl flooring

Local Amenities



2km Murray Bridge Station

1.5km Murray Bridge Train Memorial

1.2km Murray Bridge Marketplace

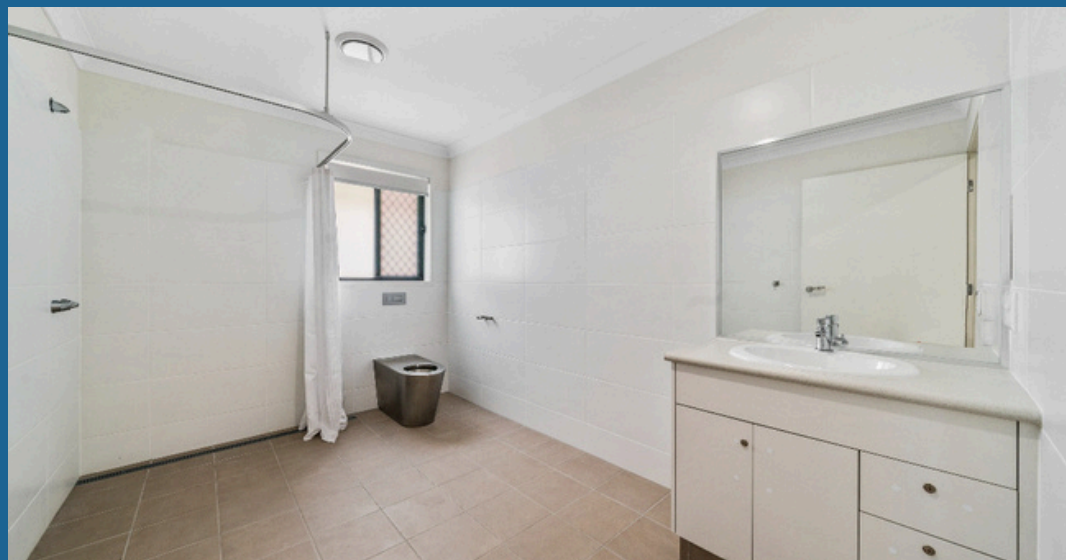
1.6km Bunnings

510m Murray Bridge Golf Club

500m Murray Bridge Hospital

460m IGA

890m Murraylands Cycle Speedway



Murray Bridge

Murray Bridge is a vibrant regional city located just 75 kilometres, or about a one-hour drive, from Adelaide, South Australia's capital. As part of the Murraylands region, it offers a relaxed lifestyle, lower population density and a strong sense of community. This makes it ideal for NDIS participants seeking stability, space and access to quality support. With growing demand for disability accommodation in regional centres, Murray Bridge stands out as a location that combines affordability, accessibility and connection.

For participants eligible for Robust SDA housing, Murray Bridge provides a calm, low-traffic environment that supports people with complex behavioural needs. The surrounding neighbourhoods are quiet and predictable, helping to reduce sensory overload and promote emotional regulation. Access to the scenic Murray River, walking trails and parks also creates opportunities for nature-based wellbeing and recreation. This kind of environment is especially beneficial for participants who may need space, structure and fewer environmental triggers.

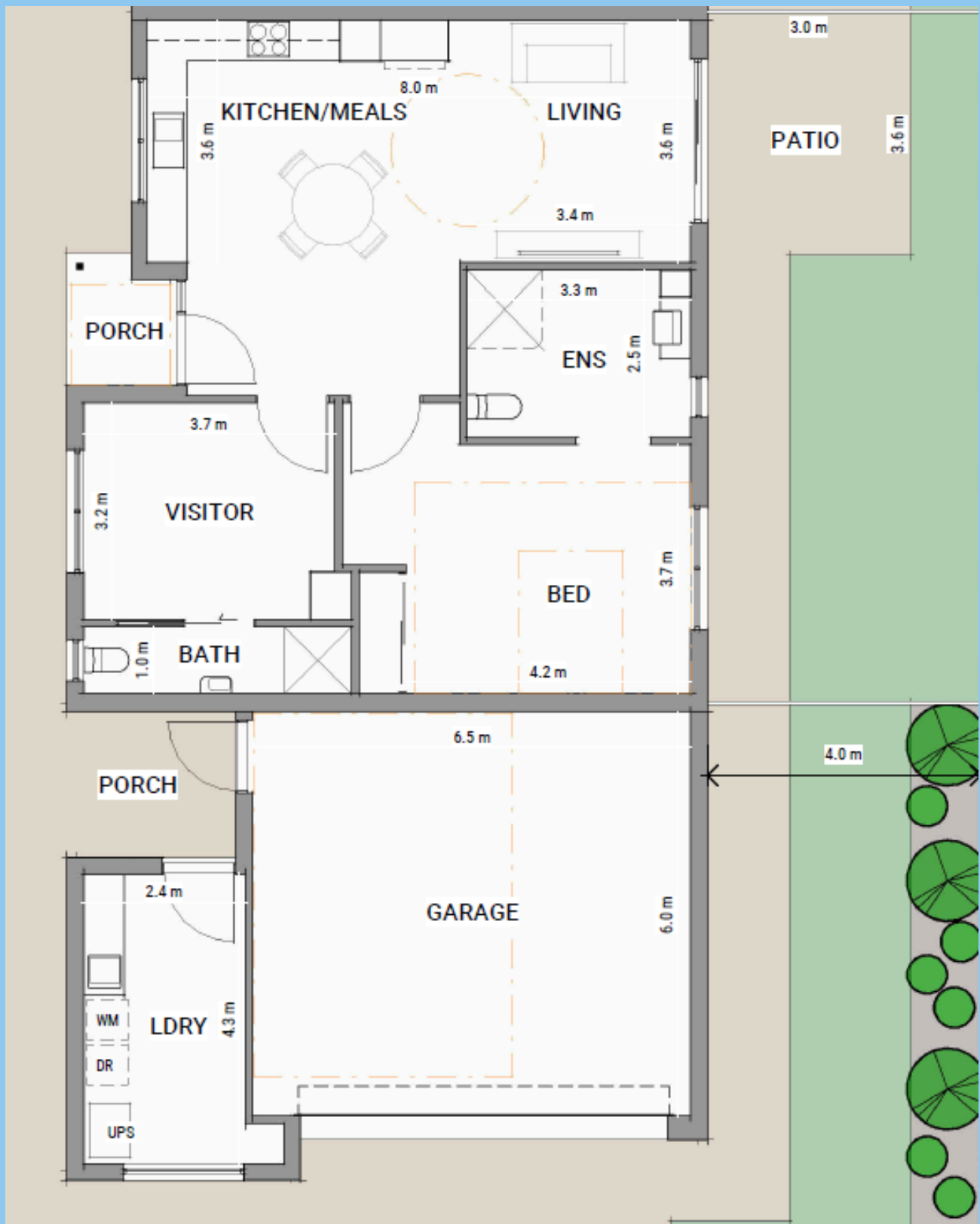
Murray Bridge offers essential services including a local hospital, community health clinics and a growing network of NDIS providers. Many support coordinators and allied health professionals are based in or travel regularly to the region. For participants who prefer or require flexible care options, telehealth is widely supported. The proximity to Adelaide means participants, families, and providers can access metropolitan-level services when needed, while still enjoying the lifestyle benefits of a regional area.

Transport and accessibility are also strengths. The South Eastern Freeway connects Murray Bridge directly to Adelaide, making it convenient for families, providers, and support staff to travel to and from the area. Public transport, local taxi services, and NDIS-registered transport providers operate in the region.

From an investment and service planning perspective, Murray Bridge is part of South Australia's regional growth strategy, with continued infrastructure investment in health, education, and housing. The local demand for Specialist Disability Accommodation is growing, and regional participants often have more housing choice compared to metro areas, where waitlists are longer and land availability is limited.



Floor Plan



Submit your interest now

1300 869 203

enquiries@sdaaustraliagroup.com.au

